



Case Study: Henry Building

PROJECT DETAILS

Project Name

Henry Building

Location

Portland

Property Size

1 Building
173 Units

Electric Utility

Portland General Electric

Estimated Completion

2020

Project Type

Existing Building

Program Pathway

Whole Building

Owner

Central City Concern

Energy Consultant

OHCS OR-MEP

Reserved Incentive

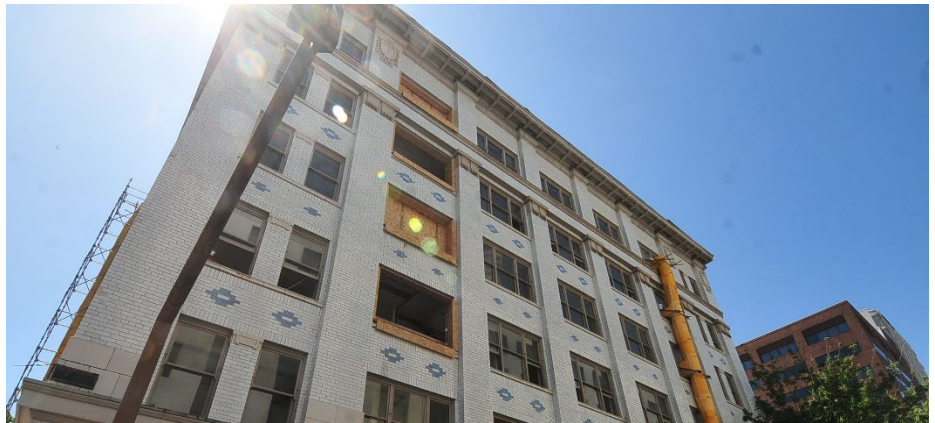
\$88,327

Electric Energy Savings

22% Compared to Code
110,409 kWh

Get started today with Oregon Multifamily Energy Program by filling out an interest form online.

www.oregonmultifamilyenergy.com



“The biggest wins for us are those that have a positive impact on the health, well-being, and safety of our residents. The savings achieved from greater energy efficiency can be reinvested into our supportive services, which help our residents live more stable and productive lives.”

-Rachel Maas, Sustainable Development Manager

Project Summary

The Oregon Multifamily Energy Program reduced the incremental costs of implementing energy efficiency measures in the Henry Building, a transitional housing facility in downtown Portland. The project team maximized savings potential by working with both OR-MEP and Energy Trust of Oregon. This project included a historic rehab of existing units and the addition of new units, open to the outdoors, within the building's central core. The Henry Building houses short-term residents who do not pay for electric utilities. Central City Concern prioritized occupancy sensing control measures to offset resident behavior which had previously led to higher energy costs with heating and lighting usage.

Measures Summary

The Oregon Multifamily Energy Program incentivized the following energy efficiency measures proposed in the Henry Building:



- Mini-Split Heat Pump
- In-Unit Window Watchers Thermostats



- LED Lighting: In-Unit and Common Area
- Common Area Occupancy Sensors



- Roof Insulation
- Air Sealing
- Efficient Storm Windows



- ENERGY STAR Refrigerators